

**PAKISTAN**

PAKISTAN CIVIL AVIATION AUTHORITY
AERONAUTICAL INFORMATION MANAGEMENT (AIM)
(ISO 9001 : 2008 CERTIFIED)
HEADQUARTERS TERMINAL # 1,
JINNAH INTERNATIONAL AIRPORT
KARACHI – 75200.

PHONE: (92 21) 99242155
(92 21) 99071111 EXT-2288 / 2289
FAX: (92 21) 9924 2045
TELEGRAPHIC ADDRESS:
CIVILDROME
AFTN: OPKCYOYX
E-Mail: aisophq@caapakistan.com.pk
Website: www.caapakistan.com.pk

AIP SUPPLEMENT
S02, S03 & S04/18
15TH MARCH 2018

ALL TIMES UTC

EFFECTIVE DATE 26TH APRIL 2018

S-02/18

REVISED INSTRUMENT APPROACH PROCEDURE RNAV (GNSS) RWY-24 OF GWADAR INT'L AIRPORT (OPGD)

1. With effect from 0001 UTC 26th April, 2018.
2. Permanent.
3. The Instrument Approach Procedure RNAV (GNSS) RWY-24 has been revised. For details see **Appendix-A** to this AIRAC AIP Supplement.
4. Incorporate in AIP Pakistan page AD2.OPGD accordingly.

S-03/18

NEW INSTRUMENT APPROACH PROCEDURE RNAV (GNSS) RWY-06 OF GWADAR INT'L AIRPORT (OPGD)

1. With effect from 0001 UTC 26th April, 2018.
2. Permanent.
3. The new Instrument Approach Procedure RNAV (GNSS) RWY-06 has been established. For details see **Appendix-B** to this AIRAC AIP Supplement.
4. Incorporate in AIP Pakistan page AD2.OPGD accordingly.

S-04/18

NEW RNAV STANDARD DEPARTURE INSTRUMENT CHART SID FOR RWY-25L/R OF KARACHI / JINNAH INT'L AIRPORT (OPKC)

1. With effect from 0001 UTC 26th April, 2018.
2. Permanent.
3. The following new RNAV Standard Departure charts Instrument (SID) for RWY-25L/R have been established of Karachi / Jinnah Int'l airport (OPKC).
 - i. RNAV BADUL 1D RWY-25L/R
 - ii. RNAV DANGI 1C RWY-25L/R
 - iii. RNAV NIROL 1C RWY-25L/R
 - iv. RNAV MELOM 1F & 1G RWY-25L/R
4. For details see **Appendix-C** to this AIRAC AIP Supplement.
5. Incorporate in AIP Pakistan AD2.OPKC accordingly.

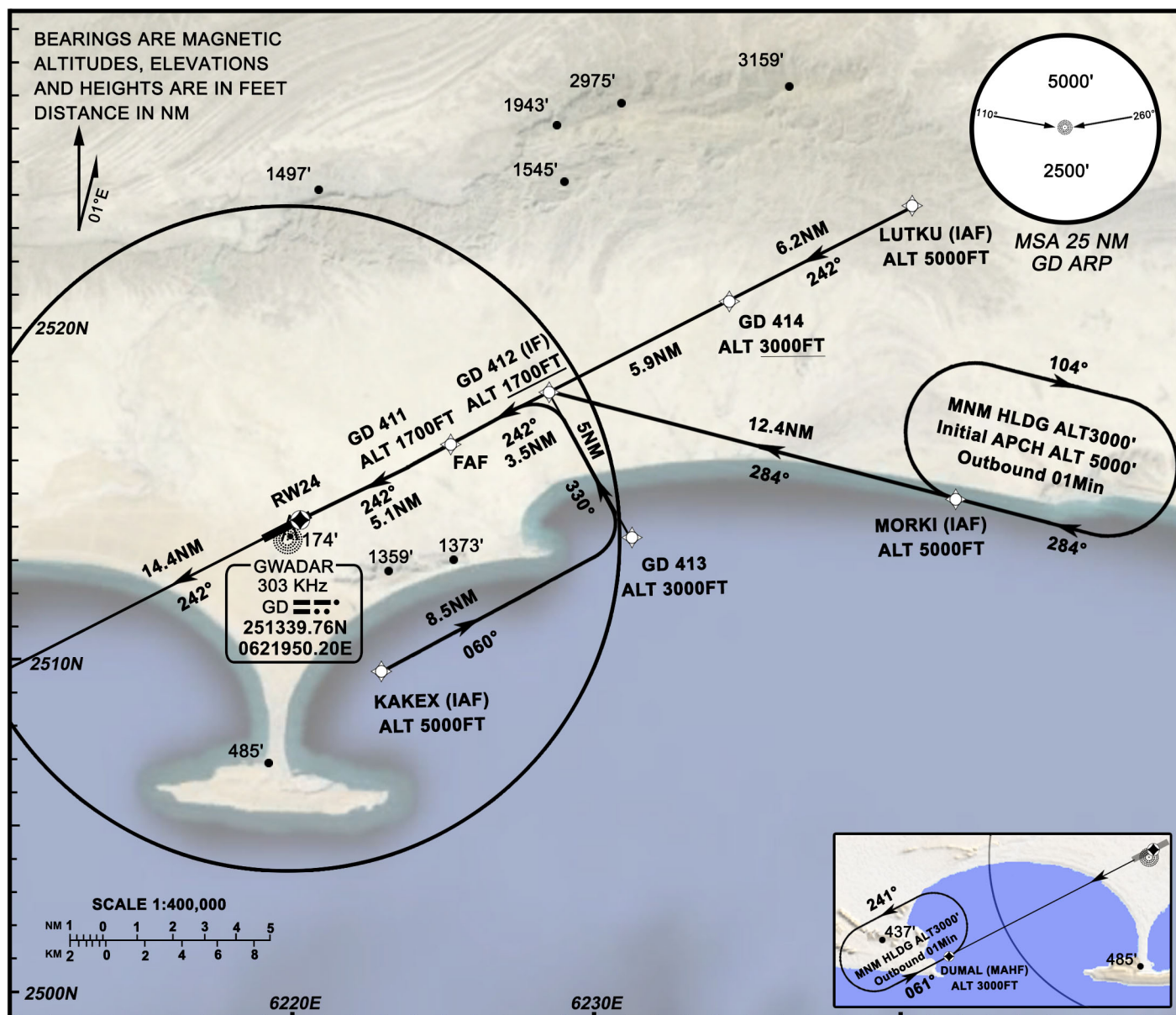
- END -

INSTRUMENT APPROACH
CHART - ICAO

AD ELEVATION 32 FT
HEIGHTS RELATED
TO AD ELEVATION

TWR 122.5

GWADAR
Gwadar Int,I
RNAV(GNSS) RWY-24



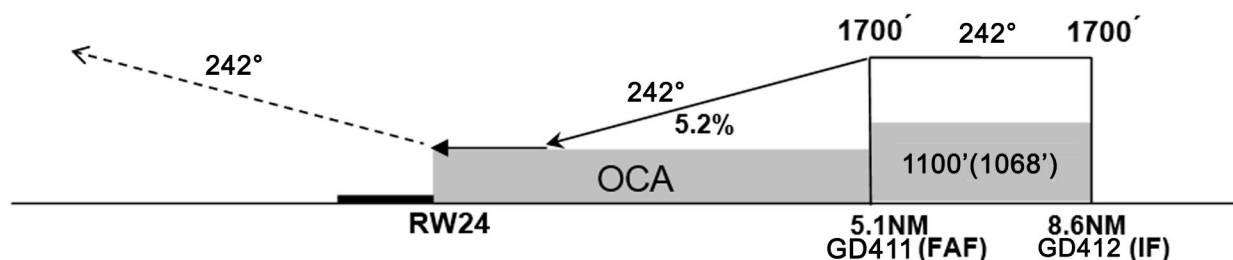
TRANSITION LEVEL FL75
TRANSITION ALT 5500'

LNAV Vertical Advisory Profile

Dist from THR RW 24 (NM)	5.0	4.0	3.0	2.0
Altitude (ft)	1670	1360	1040	720

MISSED APPROACH

Climb 3000ft straight to DUMAL and contact ATC.



OCA / H	A	B
LNAV	470'(438')	

Note: Provision of RAIM prediction, if considered, is the responsibility of operator.

WAYPOINTS DATA

WP NAME	USE	LATITUDE	LONGITUDE
MORKI	IAF/HF	251501.00N	0624150.00E
KAKEX	IAF	250935.00N	0622300.00E
GD413	IAF	251345.00N	0623113.00E
LUTKU	IAF	252344.00N	0624029.00E
GD414	IAF	252053.00N	0623424.00E
GD412	IF	251809.00N	0622835.00E
GD411	FAF	251632.00N	0622508.90E
RW24	MAPt (THR)	251411.30N	0622010.33E
DUMAL	MAHF	250731.00N	0620605.00E

INSTRUMENT APPROACH PROCEDURES CODING TABLE

Path Descriptor	Waypoint Name	Fly over	Course °M (°T)	Turn Direction	Altitude	Speed Limit	Magnetic Variation	Navigation Performance
IF	MORKI	-	284(284.6)	-	5000	-	1.0E	RNP APCH
TF	GD412	-	242 (242.6)	L	1700+	-	1.0E	RNP APCH
TF	GD411	-	242 (242.6)	-	1700	-	1.0E	RNP APCH
TF	RW24	Y	242 (242.6)	-	470	-	1.0E	RNP APCH
TF	DUMAL	Y	-	-	3000	-	1.0E	RNP APCH

Path Descriptor	Waypoint Name	Fly over	Course °M (°T)	Turn Direction	Altitude	Speed Limit	Magnetic Variation	Navigation Performance
IF	KAKEX	-	060(060.9)	-	5000	-	1.0E	RNP APCH
	GD413		330(331.4)	L	3000	-	1.0E	RNP APCH
TF	GD412	-	242 (242.6)	L	1700+	-	1.0E	RNP APCH
TF	GD411	-	242 (242.6)	-	1700	-	1.0E	RNP APCH
TF	RW24	Y	242 (242.6)	-	470	-	1.0E	RNP APCH
TF	DUMAL	Y	-	-	3000	-	1.0E	RNP APCH

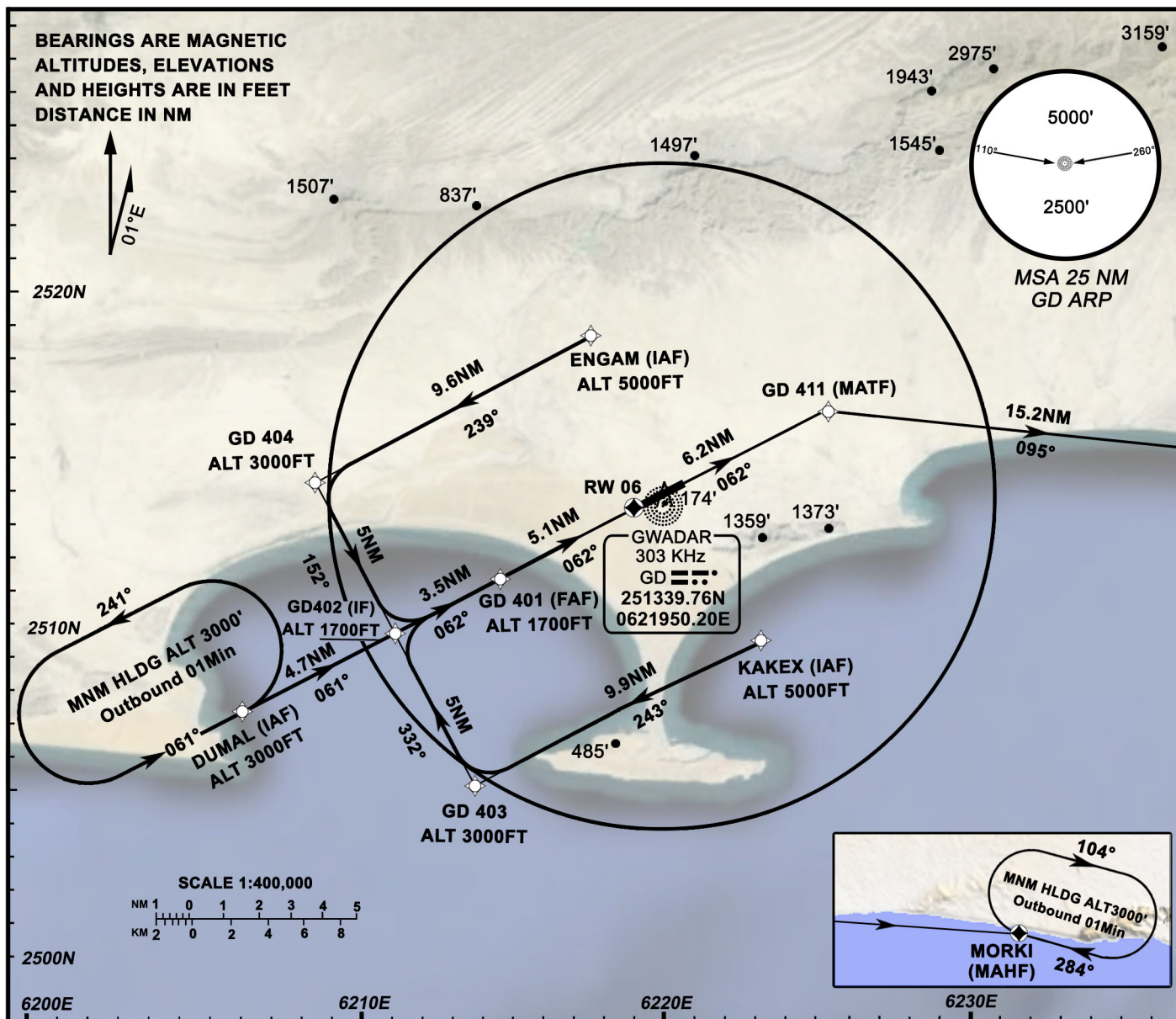
Path Descriptor	Waypoint Name	Fly over	Course °M (°T)	Turn Direction	Altitude	Speed Limit	Magnetic Variation	Navigation Performance
IF	LUTKU	-	242(242.7)	-	5000	-	1.0E	RNP APCH
TF	GD414		242(242.7)	-	3000+	-	1.0E	RNP APCH
TF	GD412	-	242(242.6)	-	1700+	-	1.0E	RNP APCH
TF	GD411	-	242(242.6)	-	1700	-	1.0E	RNP APCH
TF	RW24	Y	242(242.6)	-	470	-	1.0E	RNP APCH
TF	DUMAL	Y	-	-	3000	-	1.0E	RNP APCH

INSTRUMENT APPROACH
CHART - ICAO

AD ELEVATION 32 FT
HEIGHTS RELATED
TO THR ELEV 22 FT

TWR 122.5

GWADAR
Gwadar Int'l
RNAV(GNSS) RWY-06



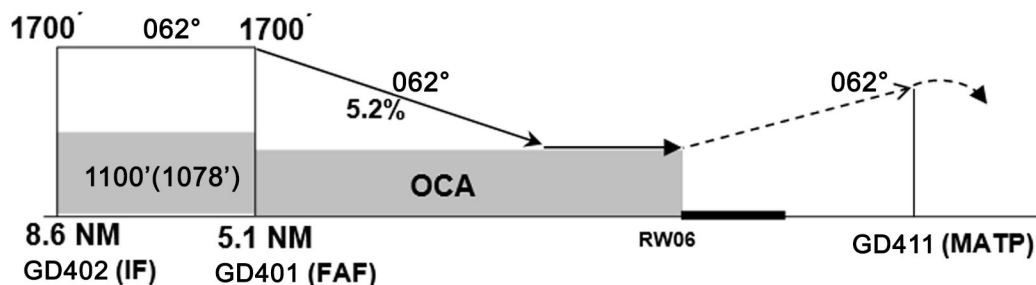
TRANSITION LEVEL FL75
TRANSITION ALT 5500'

LNAV Vertical Advisory Profile

Dist RW06 (NM)	5.0	4.0	3.0	2.0
Altitude (ft)	1660	1350	1030	710

MISSED APPROACH

Climb straight to GD411
then turn right track to
MORKI climbing 3000ft
and contact ATC.



OCA / H	A	B
LNAV	470'(448')	

Note: Provision of RAIM prediction, if considered, is the responsibility of operator.

WAYPOINTS DATA

WP NAME	USE	LATITUDE	LONGITUDE
DUMAL	IAF/HF	250731.00N	0620605.00E
KAKEX	IAF	250935.00N	0622300.00E
GD403	IAF	250516.00N	0621314.00E
ENGAM	IAF	251854.00N	0621722.00E
GD404	IAF	251410.00N	0620810.00E
GD402	IF	250943.00N	0621042.00E
GD401	FAF	251119.80N	0621407.30E
RW06	MAPt (THR)	251341.63N	0621907.47E
GD411	MATP	251632.00N	0622508.90E
MORKI	MAHF	251501.00N	0624150.00E

INSTRUMENT APPROACH PROCEDURES CODING TABLE

Path Descriptor	Waypoint Name	Fly over	Course °M (°T)	Turn Direction	Altitude	Speed Limit	Magnetic Variation	Navigation Performance
IF	ENGAM	-	239(240.5)	-	5000	-	1.0E	RNP APCH
TF	GD404	-	152(152.6)	L	3000	-	1.0E	RNP APCH
TF	GD402	-	062(062.6)	L	1700+	-	1.0E	RNP APCH
TF	GD401	-	062(062.5)	-	1700	-	1.0E	RNP APCH
TF	RW06	Y	062(062.6)	-	470	-	1.0E	RNP APCH
TF	GD411	-	095(095.6)	R	-	-	1.0E	RNP APCH
TF	MORKI	Y	-	-	3000	-	1.0E	RNP APCH

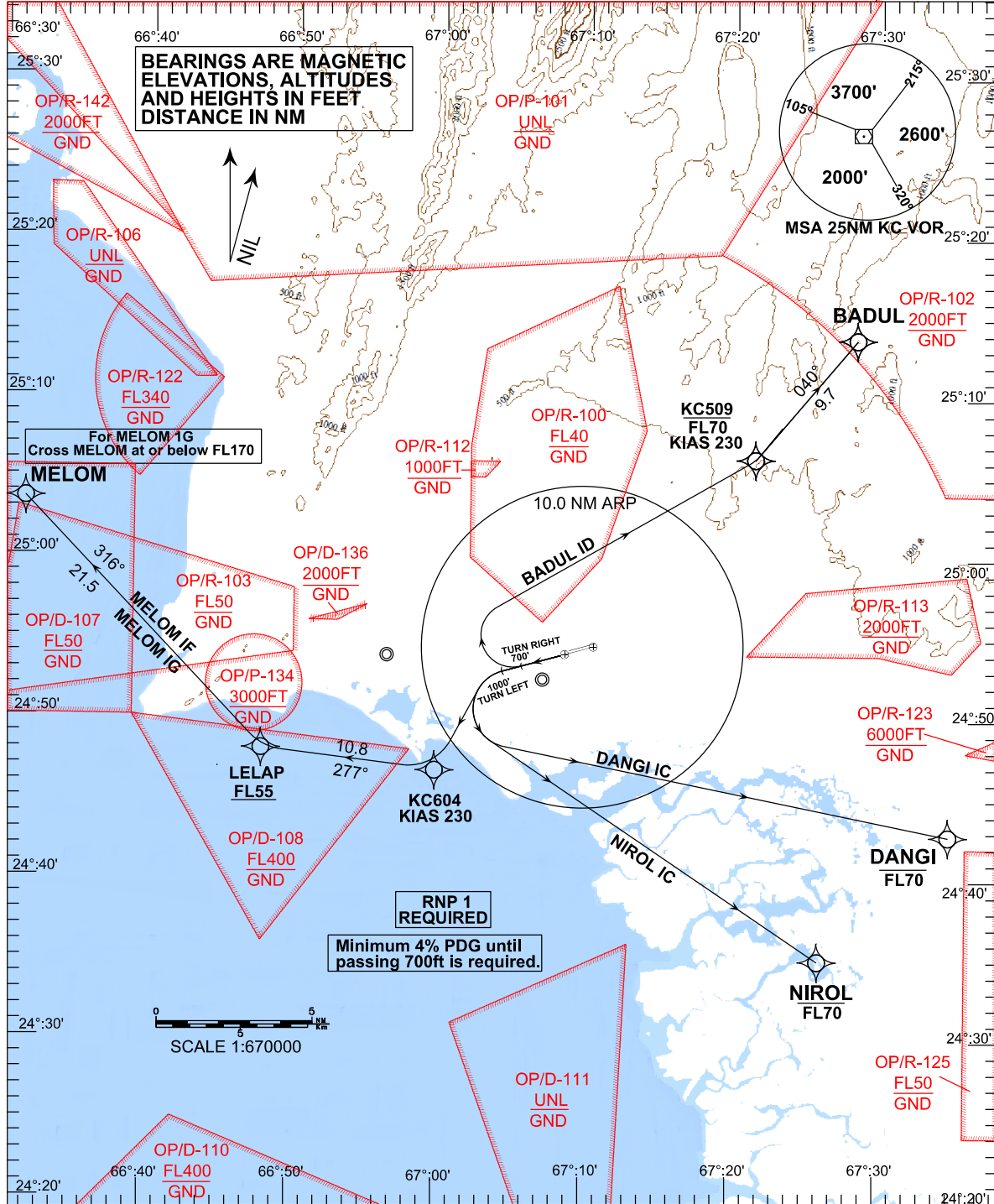
Path Descriptor	Waypoint Name	Fly over	Course °M (°T)	Turn Direction	Altitude	Speed Limit	Magnetic Variation	Navigation Performance
IF	KAKEX	-	243(244.1)	-	5000	-	1.0E	RNP APCH
TF	GD403	-	332(332.6)	R	3000	-	1.0E	RNP APCH
TF	GD402	-	062(062.6)	R	1700+	-	1.0E	RNP APCH
TF	GD401	-	062(062.5)	-	1700	-	1.0E	RNP APCH
TF	RW06	Y	062(062.6)	-	470	-	1.0E	RNP APCH
TF	GD411	-	095(095.6)	R	-	-	1.0E	RNP APCH
TF	MORKI	Y	-	-	3000	-	1.0E	RNP APCH

Path Descriptor	Waypoint Name	Fly over	Course °M (°T)	Turn Direction	Altitude	Speed Limit	Magnetic Variation	Navigation Performance
IF	DUMAL	-	061(062.4)	-	3000	-	1.0E	RNP APCH
TF	GD402	-	062(062.6)	-	1700+	-	1.0E	RNP APCH
TF	GD401	-	062(062.5)	-	1700	-	1.0E	RNP APCH
TF	RW06	Y	062(062.6)	-	470	-	1.0E	RNP APCH
TF	GD411	-	095(095.6)	R	-	-	1.0E	RNP APCH
TF	MORKI	Y	-	-	3000	-	1.0E	RNP APCH

RNAV STANDARD DEPARTURE
INSTRUMENT CHART
(SID) - ICAOTRANSITION LEVEL FL50
TRANSITION ALT 3000 FT

ATIS	GMC	TWR	APP
126.7	121.6	118.3	125.5
	118.4	118.8	121.3

KARACHI / Jinnah Int'l
 RNAV BADUL 1D RWY 25L/R
 RNAV DANGI 1C RWY 25L/R
 RNAV NIROL 1C RWY 25L/R
 RNAV MELOM 1F, 1G RWY 25L/R

**BADUL 1D DEPARTURE:**

After departure RWY 25 L/R climb straight ahead until passing 700ft thereafter turn right direct to KC509, cross KC509 at or below FL70 then to BADUL, maintain ATC assigned level.

DANGI 1C DEPARTURE:

After departure RWY 25 L/R climb straight ahead until passing 1000ft thereafter turn left direct to DANGI, cross DANGI at or below FL70, maintain ATC assigned level.

NIROL 1C DEPARTURE:

After departure RWY 25 L/R climb straight ahead until passing 1000ft thereafter turn left direct to NIROL, cross NIROL at or below FL70, maintain ATC assigned level.

MELOM 1F DEPARTURE:

After departure RWY 25 L/R climb straight ahead until passing 1000ft thereafter turn left direct to KC604 then LELAP, cross LELAP at or above FL55, then to MELOM, maintain ATC assigned level.

MELOM 1G DEPARTURE:

After departure RWY 25 L/R climb straight ahead until passing 1000ft thereafter turn left direct to KC604 then LELAP, cross LELAP at or above FL55, then to MELOM, cross MELOM at or below FL170, maintain ATC assigned level.

Way points Data

WP NAME	USE	LATITUDE	LONGITUDE
KC509	DWP	25°06'15.00"N	067°21'30.00"E
KC604	DWP	24°46'45.00"N	066°59'45.00"E
LELAP	DWP	24°48'00.00"N	066°48'00.00"E
BADUL	DWP	25°13'44.00"N	067°28'25.00"E
DANGI	ENR	24°42'48.00"N	067°34'52.00"E
NIROL	ENR	24°35'00.00"N	067°26'00.00"E
MELOM	ENR	25°03'34.00"N	066°31'34.00"E

Tabular Descriptions BADUL1D Departure

Path Term.	Waypoint Name	Fly-Over	Course °M(°T)	Magnetic Variation	Turn Direction	Altitude	Speed Limit	Navigation Spec.
CA	-	-	254(254.42)	NIL	-	700 ft	-	RNP1
DF	KC509	-	-	NIL	R	-	230	RNP1
TF	BADUL	-	040(040.09)	NIL	L	FL070 -	-	RNP1

Tabular Descriptions DANGI 1C Departure

Path Term.	Waypoint Name	Fly-Over	Course °M(°T)	Magnetic Variation	Turn Direction	Altitude	Speed Limit	Navigation Spec.
CA	-	-	254(254.42)	NIL	-	1000 ft	-	RNP1
DF	DANGI	-	-	NIL	L	FL70 -	-	RNP1

Tabular Descriptions NIROL 1C Departure

Path Term.	Waypoint Name	Fly-Over	Course °M(°T)	Magnetic Variation	Turn Direction	Altitude	Speed Limit	Navigation Spec.
CA	-	-	254(254.42)	NIL	-	1000 ft	-	RNP1
DF	NIROL	-	-	NIL	L	FL70 -	-	RNP1

Tabular Descriptions MELOM 1F Departure

Path Term.	Waypoint Name	Fly-Over	Course °M(°T)	Magnetic Variation	Turn Direction	Altitude	Speed Limit	Navigation Spec.
CA	-	-	254(254.42)	NIL	-	1000 ft	-	RNP1
DF	KC604	-	-	NIL	L	-	230	RNP1
TF	LELAP	-	277(276.61)	NIL	R	FL55 +	-	RNP1
TF	MELOM	-	316(316.03)	NIL	R	-	-	RNP1

Tabular Descriptions MELOM 1G Departure

Path Term.	Waypoint Name	Fly-Over	Course °M(°T)	Magnetic Variation	Turn Direction	Altitude	Speed Limit	Navigation Spec.
CA	-	-	254(254.42)	NIL	-	1000 ft	-	RNP1
DF	KC604	-	-	NIL	L	-	230	RNP1
TF	LELAP	-	277(276.61)	NIL	R	FL55 +	-	RNP1
TF	MELOM	-	316(316.03)	NIL	R	FL170 -	-	RNP1